

OWNER'S/
OPERATOR'S
MANUAL

MODEL NO.

720 / 726

CAUTION

For Safe Operation
Read Rules And
Instructions Carefully

SINO LEEINGLES, PIDA AYUDA
A AIGUIEN QUE SI LO LEA
PARA QUE LE TRADUZCA LAS
MEDIDAS DE SEGURIDAD.

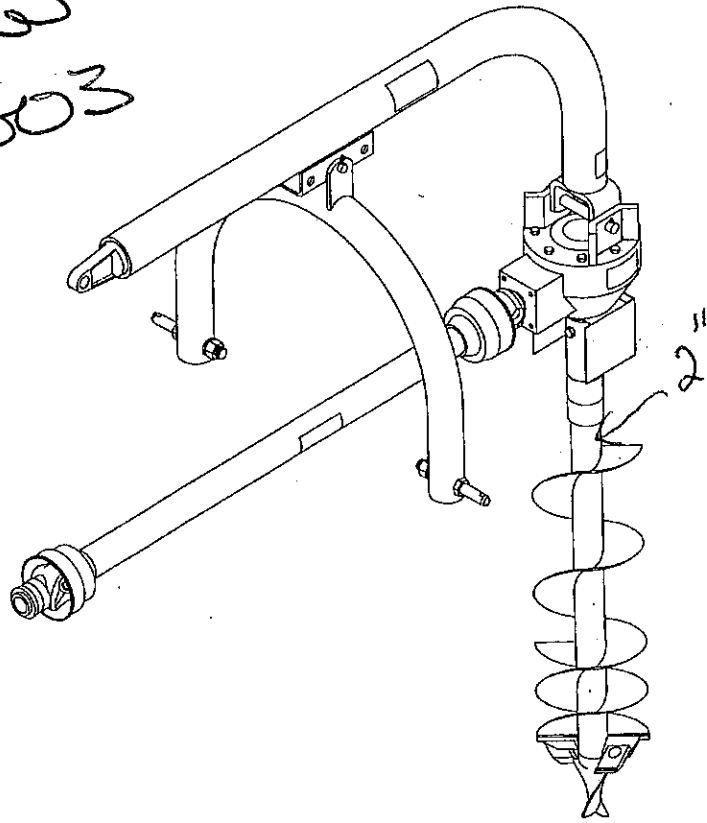
**STATEMENT
OF POLICY**

It is the policy of Worksaver, Inc. to improve its products where it is possible and practical to do so. Worksaver, Inc. reserves the right to make changes or improvements in design and construction at any time, without incurring the obligation to make these changes on previously manufactured units.

**HEAVY DUTY 3-PT. MOUNTED
POST HOLE DIGGER**

**Safety Instructions
Tractor Preparation
Operating Instructions**

**Assembly & Mounting
Maintenance
Repair Parts**



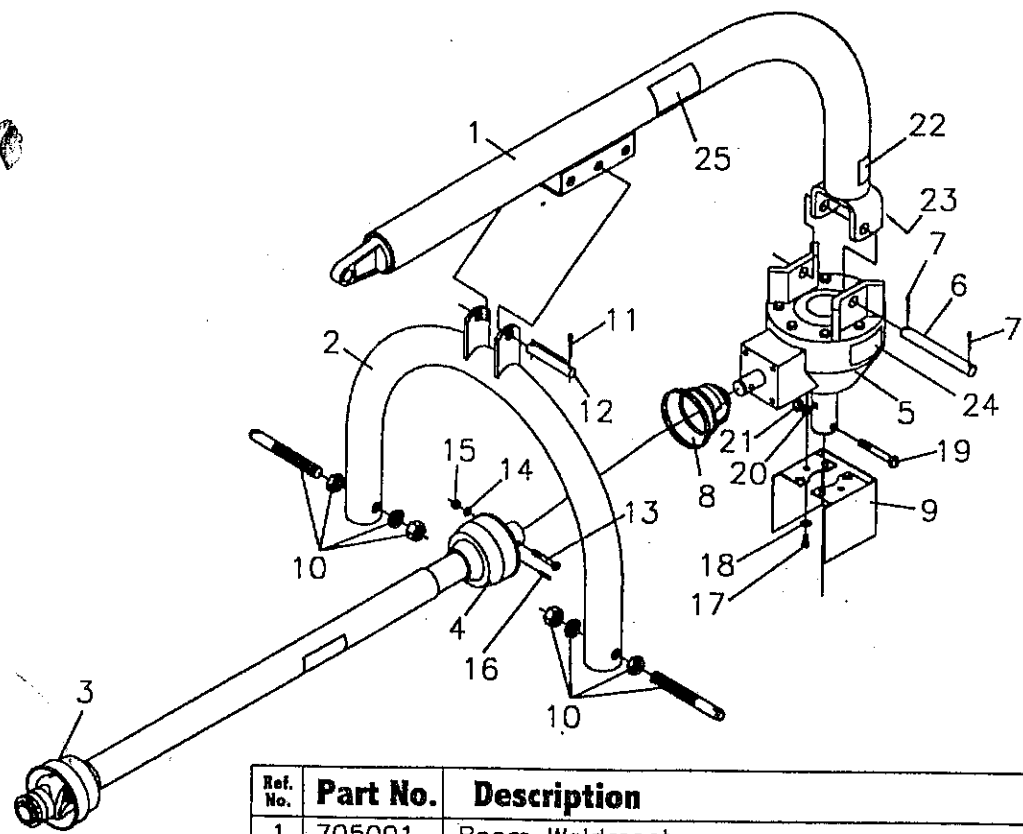
CAUTION

**THE FOLLOWING SAFETY PRECAUTIONS SHOULD BE THOROUGHLY UNDERSTOOD
BEFORE ATTEMPTING TO BEGIN ASSEMBLING THIS MACHINE**

1. Select an area for assembly that is clean and free of any debris which might cause persons working on the assembly to trip.
2. Do not lift heavy parts or assemblies. Use crane, jack, tackle, fork trucks or other mechanical devices.
3. Preview the assembly instructions in your operator's manual before proceeding further.
4. If the assembly instructions call for parts or assemblies to be blocked up, use only blocking material that is in good condition and is capable of handling the weight of the assembly to be blocked. Also insure that the blocking material is on a clean, dry surface.
5. Never put hands, or any part of body, under blocked up assemblies if at all possible.
6. After completing assembly, thoroughly inspect the machine to be sure that all nuts, bolts, hydraulic fittings or any other fastened assemblies have been thoroughly tightened.
7. Before operating the machine, thoroughly read the operation section of your operator's manual.
8. Before operating, read the maintenance section of your operator's manual to be sure that any parts requiring lubrication, such as gearboxes, are full, to avoid any possible damage.
9. **Before operating equipment - If you have any questions regarding the proper assembly or operation, contact your dealer or representative.**

2726

MODEL 720 POST HOLE DIGGER PARTS LIST



Ref. No.	Part No.	Description	No. Req'd.
1	705001	Boom Weldment	1
2	3814007	Yoke Weldment	1
	706050	PTO Shaft Complete	1
3	706051	1/2 PTO (Tractor End)	1
4	706052	1/2 PTO (Implement End)	1
NS	706053	W Kit (U-Joint Repair Kit)	Var.
NS	706058	Implement End Yoke	1
NS	706059	Springlock Yoke Assembly (Tractor End)	1
NS	706061	Repair Kit - Springlock, Yoke Assembly	1
NS	706063	Plastic Shield Assembly (Implement End)	1
NS	706064	Plastic Shield Assembly (Tractor End)	1
NS	706068	Safety Sign (Outer Shield)	1
NS	706069	Safety Sign (Joint Tube)	1
5	706095	Gearbox	1
6	706096	Gearbox Pin	1
7	706097	Cotter Pin 3/16" x 2"	2
8	706165	Shield, Gearbox Input (Plastic)	1
9	706092	Shield, Output	1
10	590071	Lift Pin w/Hardware (AK-479)	2
11	2504121	Cotter Pin 3/16" x 1 1/2"	2
12	3814019	Boom Adjustment Pin	1
13	2503039	Bolt 3/8"-16NC x 2 1/2" Hex Head Gr.2	1
14	2502008	Washer 3/8" Springlock	1
15	2500004	Nut 3/8"-16NC Full Hex	1
16	2504011	Roll Pin 3/16" x 1 1/4"	1
17	2503094	Bolt 5/16"-18NC x 3/4" Hex Head Gr.2	2
18	2501012	Washer 5/16" Flat	2
19	2503109	Bolt 1/2"-13NC x 3 1/2" Hex Head Gr.2	2
20	2502002	Washer 1/2" Springlock	2
21	2500003	Nut 1/2"-13NC Full Hex	2
22	101130	Safety Sign - Danger (Rotating Parts)	1
23	101015	Safety Sign - PHD Instructions	1
24	101188	Safety Sign - Gearbox Notice	1
25	101032	Safety Sign - Danger (Entanglement)	1

170970

SHEAR BOLT

AUGER TEETH MOUNTING PATTERNS



FIG. B
6"

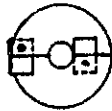


FIG. C
9"

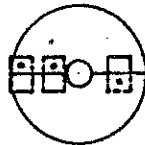


FIG. D
12" & 14"

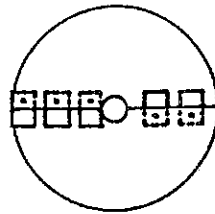


FIG. E
18"

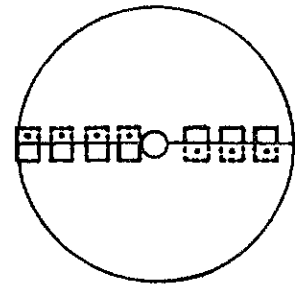
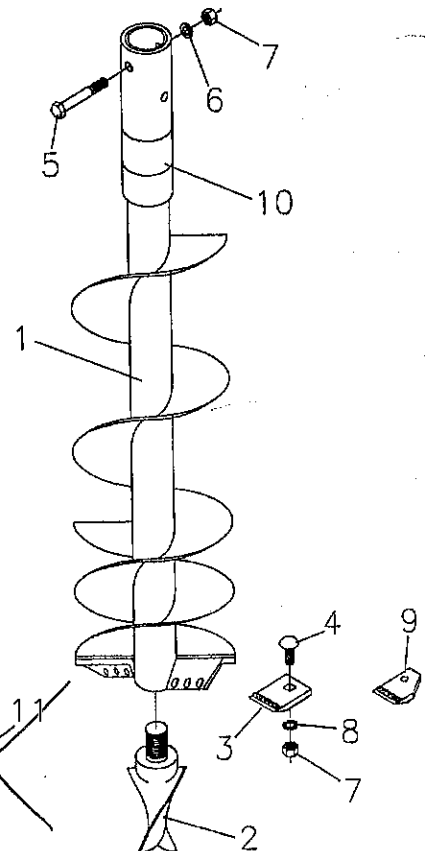


FIG. F
24"

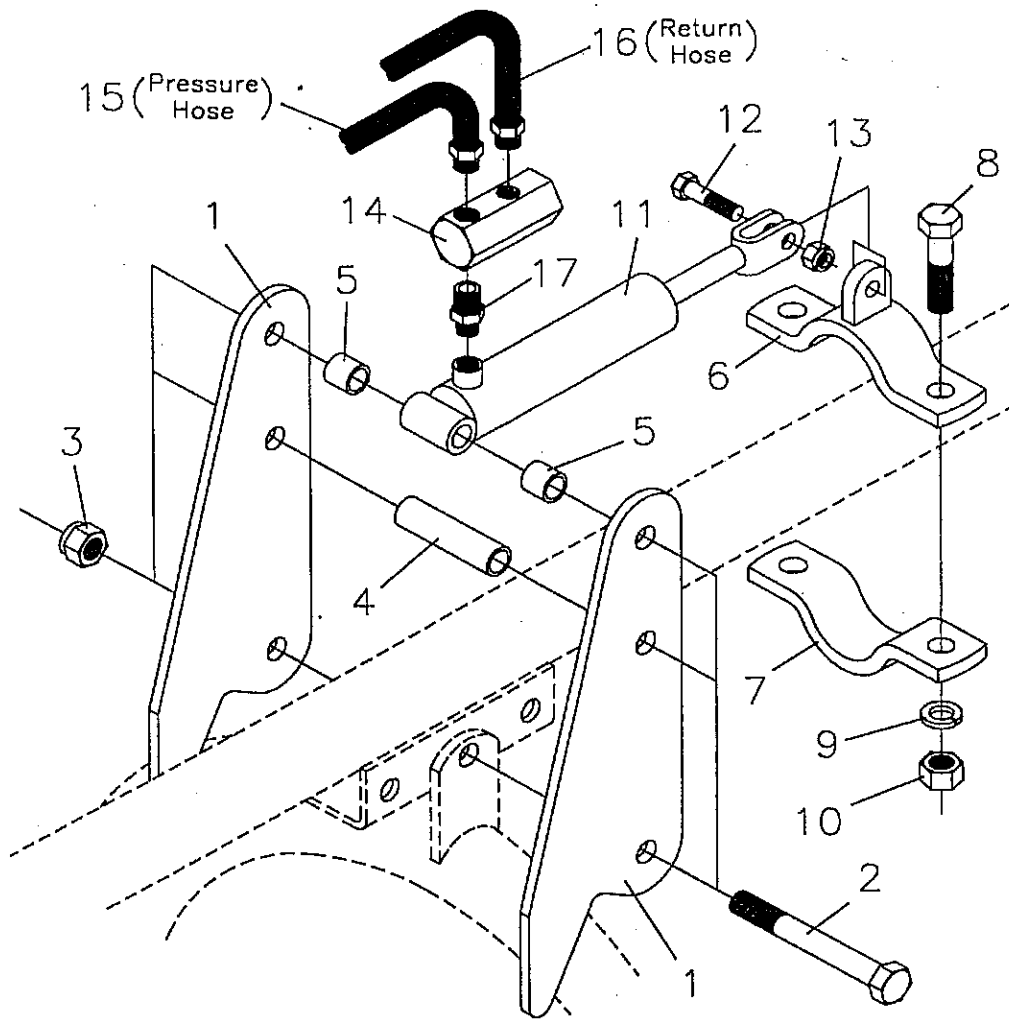
HEAVY DUTY AUGER PARTS LIST

Ref. No.	Part No.	Description	No. Req'd.
1	706150	6" HD Single Flight Auger (Complete)	Opt.
	706155	6" HD Double Flight Auger "	Opt.
	706109	9" HD Single Flight Auger "	Opt.
	706009	9" HD Double Flight Auger "	Opt.
	706112	12" HD Single Flight Auger "	Opt.
	706012	12" HD Double Flight Auger "	Opt.
	706033	14" HD Single Flight Auger "	Opt.
	706037	14" HD Double Flight Auger "	Opt.
	706070	18" HD Double Flight Auger "	Opt.
	706075	24" HD Double Flight Auger "	Opt.
2	170802	Fishtail Auger Point	1
3	706021	Red Claw Digger Tooth	Var.
4	2503166	Bolt 1/2"-13NC x 1 1/4" Carriage Head	Var.
5	2503109	Bolt 1/2"-13NC x 3 1/2" Hex Head	2
6	2502002	Washer 1/2" Springlock	2
7	2500003	Nut 1/2" Full Hex	Var.
8	2502003	1/2" External Star Lockwasher	Var.
9	171903*	Auger Cutting Edge (6" only)	2
N/S	2503178*	Bolt 3/8"-16NC x 1 1/4" Carriage Head (6" only)	2
N/S	2502014*	3/8" External Star Washer (6" only)	2
N/S	2500004*	Nut 3/8" Full Hex (6" only)	2
10	101131	Safety Sign - Danger (Guard Missing)	1
11	210007	Optional Screw Type Auger Point	1

*Old Style 6" Augers (prior to June 2000) -- New 6" Augers use Red Claw Digger Tooth (Item #3)



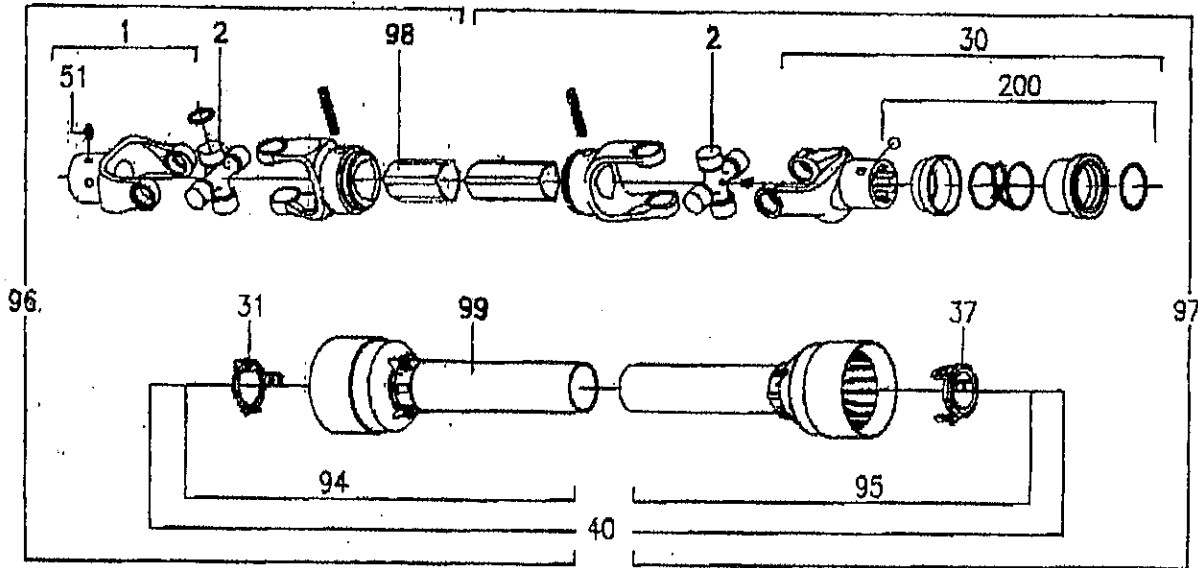
DFK-70 DOWN FORCE KIT PARTS LIST



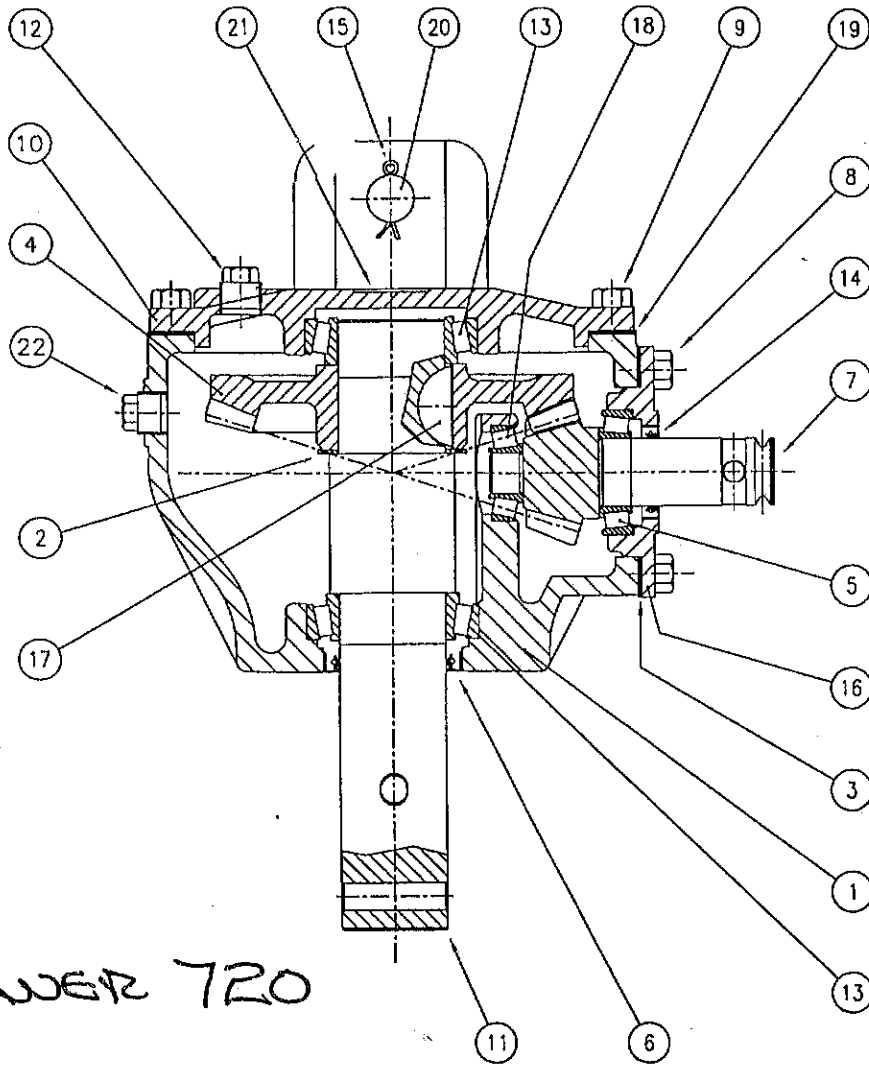
Ref. No.	Part No.	Description	No. Req'd.
1	706081	Pivot Plate	2
2	2503035	Bolt 3/4"-10NC x 6" Hex Head Gr.5	3
3	2500037	Nut 3/4"-10NC Hex Nylock	3
4	706082	Long Spacer 3 7/8"	1
5	706083	Short Spacer 15/16"	2
6	706084	Upper Clamp Weldment	1
7	706085	Lower Clamp Half	1
8	2503135	Bolt 3/4"-10NC x 3" Hex Head Gr.5	2
9	2502001	Washer 3/4" Springlock	2
10	2500002	Nut 3/4"-10NC Full Hex	2
11	862817	Hydraulic Cylinder 1 1/2 x 6	1
12	2503007	Bolt 1/2"-13NC x 2" Hex Head Gr.2	1
13	2500039	Nut 1/2"-13NC Hex Nylock	1
14	2505501	Relief Valve	1
15	2504102	Hydraulic Hose 3/8" x 60"	1
16	2505001	Hydraulic Hose 3/8" x 72"	1
17	2505502	Adapter Fitting 3/8" to 1/2"	1

MODEL 500 POST HOLE DIGGER
PTO REPAIR PARTS

Claude



Ref. No.	Work saver Part No.	Description	Com. Code No.	No. Req'd.
	170970	PTO Shaft Complete	07.222.097.10	1
1	170971	Yoke 1 1/4" Dia. (Smooth Bore) Imp. End w/zerk	141.022.334	1
2	170972	PTO Cross Repair Kit (Metric Series 2)	180.012.130	2
30	170973	Complete Collar Yoke C12	141.022.324	1
31	170974	Guard Retaining Collar for Outer Tube	180.012.007	1
37	170975	Guard Retaining Collar for Inner Tube	180.012.006	1
40	170976	Complete Guard w/Instruction Manual	142.220.305.7220	1
51	170977	Grease Zerk M8 x 1	190.000.020	1
94	170978	Plastic Shield Assembly (Implement End)	142.226.047.7220	1
95	170979	Plastic Shield Assembly (Tractor End)	142.227.036.7220	1
96	170980	1/2 PTO (Implement End)	123.320.094.10	1
97	170981	1/2 PTO (Tractor End)	123.420.227.10	1
98	650726	"DANGER" Label for Outer Tube	190.000.098	1
99	650727	"DANGER" Label for Outer Guard Tube	190.000.099	1
200	170982	Slide Collar Kit 1 3/8"	165.000.628	1



WORKSAVER 720

RIF.		COMPANY:			INDEX	COM. N°
					02	008.694
		RATIO	FIG. MONT.	COD.LETT.	L-196J	
		3.18 : 1	.	COD.NUM.	196	
					CODE	
					9.196.000.00	
POS.	WKS No.	DRG. Nr.	PCS.	DESCRIPTION		
1	Not Available	0.196.0300.00	1	CASTING & MACHINING		
2	706406	0.196.7500.00	1	SHIM KIT (51.1x63)		
3	706407	0.196.7300.00	1	GASKET KIT (81.5x118)		
4	706408	0.196.6000.00	1	CROWN GEAR Z35 M5.08		
5	706409	8.0.9.02531	1	ROLLER BEARING LM67048 - LM67010		
6	706410	8.7.1.02529	1	DUST LIP 50.8 x 66.62 x 7.92		
7	706411	0.196.5000.00	1	PINION Z11 M5.08		
8	702152	8.1.1.00061	4	BOLT M10x25 (8.8)		
9	702149	8.1.1.00073	6	BOLT M10x30 (8.8)		
10	702150	0.196.1300.00	1	TOP PLATE		
11	706412	0.196.3001.00	1	OUTPUT SHAFT		
12	702147	8.6.5.00203	1	1/2" GAS SOLID PLUG		
13	706413	8.0.9.02532	2	ROLLER BEARING LM104949 - LM104911		
14	706414	8.7.1.02530	1	DUST LIP 31.75 X 44.5 X 7.92		
15	702153	8.4.7.00671	2	COTTER PIN 5x40		
16	706415	0.196.1301.00	1	COVER		
17	706416	0.196.7000.00	1	WOODRUFF KEY 7.94 x 16.28		
18	706417	8.0.9.02533	1	ROLLER BEARING LM11910 - LM11949		
19	706418	0.196.7200.00	1	GASKET KIT (190x224.5)		
20	706419	0.196.3000.00	1	PIVOT SHAFT		
21	Not Available	U0.100.7000.00	1	NAME PLATE		
22	702146	8.6.5.00006	1	3/8" GAS SOLID PLUG		

706095